

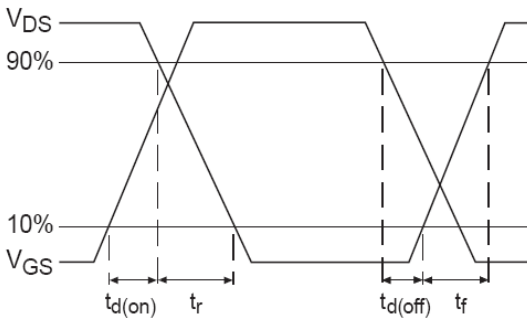
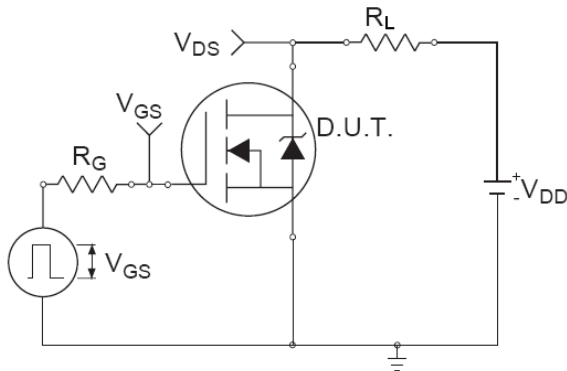
Features

- V_{DSS}=40V / V_{GSS}=±20V / I_D=130A
 R_{DS(ON)}=4mΩ(max.)@V_{GS}=10V
- High Dense Cell Design
- Reliable and Rugged
- Advanced trench process technology
- High Density Cell Design For Ultra Low On-Resistance

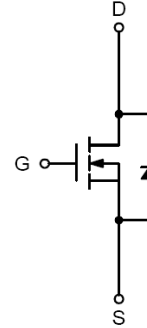
Applications

- Power Management in Inverter System
- Synchronous Rectification "

Switching Time Test Circuit and Waveforms



Pin Description



Marking and pin Assignment



TO-220-3L top view

Package Marking and Ordering Information

Device Marking	Device	Device Package	Reel Size	Tape width	Quantity
HM1404B	HM1404B	TO-220-3L	-	-	-

Absolute Maximum Ratings (T_A=25°C unless otherwise noted)

Symbol	Parameter	Typical	Unit	
V _{DSS}	Drain-Source Voltage	40	V	
V _{GSS}	Gate-Source Voltage	±20	V	
I _D	Continuous Drain Current	T _C =100°C	100	A
			130	A
I _{DP}	300us Pulsed Drain Current Tested	300	A	
I _S	Diode Continuous Forward Current	30	A	
T _J	Operating Junction Temperature	150	°C	
T _{STG}	Storage Temperature Range	-55 ~ 150	°C	

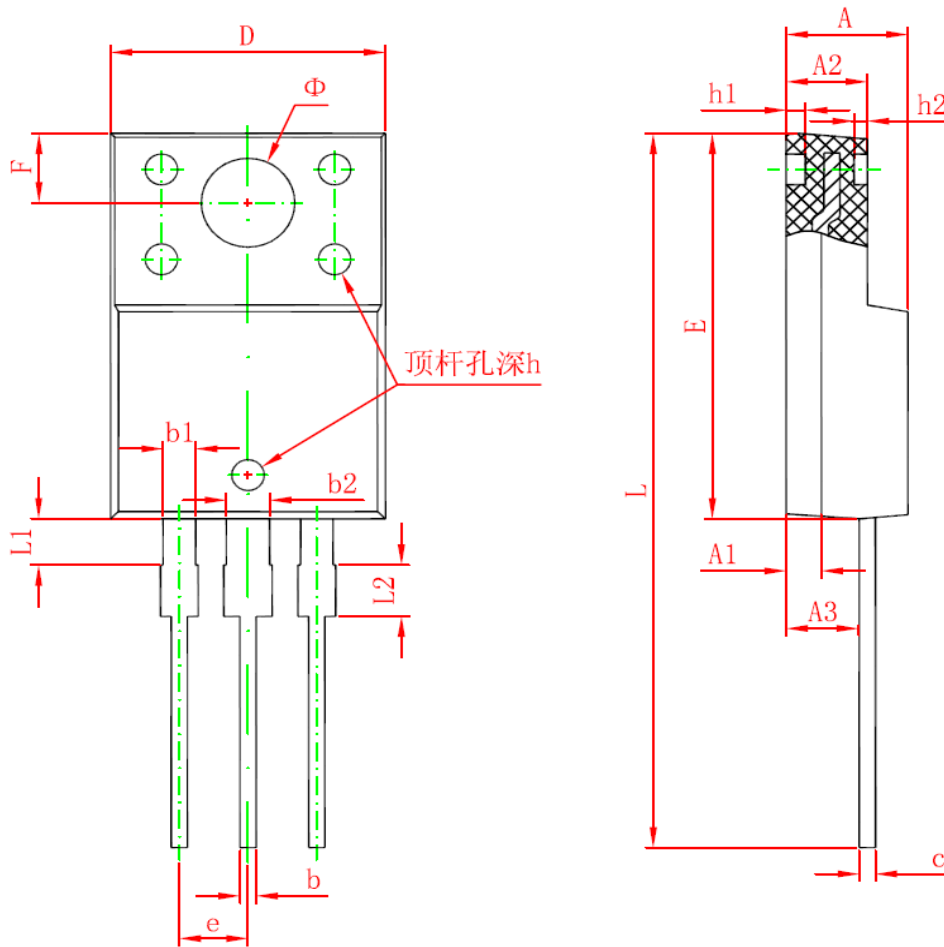
Electrical Characteristics (T_A=25°C unless otherwise noted)

Symbol	Parameter	Test Conditions	Min.	Typ	Max.	Unit
Static Characteristics						
BV _{DSS}	Drain-Source Breakdown Voltage	V _{GS} =0V, I _D =250uA	40			V
I _{DSS}	Zero Gate Voltage Drain Current	V _{DS} =32V, V _{GS} =0V			100	uA
		T _J =85°C			1	
V _{GS(th)}	Gate Threshold Voltage	V _{DS} =V _{GS} , I _D =250uA	1	2	3	V
I _{GSS}	Gate Leakage Current	V _{GS} =±20V, V _{DS} =0V			±100	nA
R _{DS(on)} ¹	Drain-Source On-Resistance	V _{GS} =10V, I _D =30A		3.2	4	mΩ
Diode Characteristics						
V _{SD} ¹	Diode Forward Voltage	I _{SD} =30A, V _{GS} =0V		0.85	1.3	V
t _{rr}	Reverse Recovery Time	I _{SD} =30A, dI _{SD} /dt=100A/us		50		ns
Q _{rr}	Reverse Recovery Charge			90		nC
Dynamic Characteristics²						
R _G	Gate Resistance	V _{GS} =0V, V _{DS} =0V, Frequency=1MHz		1.5		Ω
C _{iss}	Input Capacitance	V _{GS} =0V, V _{DS} =20V Frequency=1MHz		4500		pF
C _{oss}	Output Capacitance			800		
C _{rss}	Reverse Transfer Capacitance			240		
t _{d(on)}	Turn-On Delay Time	V _{DD} =20V, R _L =30Ω I _D =1.0A, V _{GEN} =10V R _G =6Ω		19		ns
t _r	Turn-On Rise Time			14		
t _{d(off)}	Turn-Off Delay Time			60		
t _f	Turn-Off Fall Time			35		
Gate Charge Characteristics²						
Q _g	Total Gate Charge	V _{DS} =20V, V _{GS} =10V I _D =30A		85		nC
Q _{gs}	Gate-Source Charge			30		
Q _{gd}	Gate-Drain Charge			23		

Note:

- 1: Pulse test ; pulse width ≤ 300ns, duty cycle ≤ 2%.
- 2: Guaranteed by design, not subject to production testing.

TO-220F PACKAGE OUTLINE DIMENSIONS



Symbol	Dimensions In Millimeters		Dimensions In Inches	
	Min.	Max.	Min.	Max.
A	4.300	4.700	0.169	0.185
A1	1.300 REF.		0.051 REF.	
A2	2.800	3.200	0.110	0.126
A3	2.500	2.900	0.098	0.114
b	0.500	0.750	0.020	0.030
b1	1.100	1.350	0.043	0.053
b2	1.500	1.750	0.059	0.069
c	0.500	0.750	0.020	0.030
D	9.960	10.360	0.392	0.408
E	14.800	15.200	0.583	0.598
e	2.540 TYP.		0.100 TYP.	
F	2.700 REF.		0.106 REF.	
Φ	3.500 REF.		0.138 REF.	
h	0.000	0.300	0.000	0.012
h1	0.800 REF.		0.031 REF.	
h2	0.500 REF.		0.020 REF.	
L	28.000	28.400	1.102	1.118
L1	1.700	1.900	0.067	0.075
L2	1.900	2.100	0.075	0.083

ATTENTION:

- Any and all H&M SEMI products described or contained herein do not have specifications that can handle applications that require extremely high levels of reliability, such as life-support systems, aircraft's control systems, or other applications whose failure can be reasonably expected to result in serious physical and/or material damage. Consult with your H&M SEMI representative nearest you before using any H&M SEMI products described or contained herein in such applications.
- H&M SEMI assumes no responsibility for equipment failures that result from using products at values that exceed, even momentarily, rated values (such as maximum ratings, operating condition ranges, or other parameters) listed in products specifications of any and all H&M SEMI products described or contained herein.
- Specifications of any and all H&M SEMI products described or contained herein stipulate the performance, characteristics, and functions of the described products in the independent state, and are not guarantees of the performance, characteristics, and functions of the described products as mounted in the customer's products or equipment. To verify symptoms and states that cannot be evaluated in an independent device, the customer should always evaluate and test devices mounted in the customer's products or equipment.
- H&M Semiconductor CO.,LTD. strives to supply high-quality high-reliability products. However, any and all semiconductor products fail with some probability. It is possible that these probabilistic failures could give rise to accidents or events that could endanger human lives, that could give rise to smoke or fire, or that could cause damage to other property. When designing equipment, adopt safety measures so that these kinds of accidents or events cannot occur. Such measures include but are not limited to protective circuits and error prevention circuits for safe design, redundant design, and structural design.
- In the event that any or all H&M SEMI products(including technical data, services) described or contained herein are controlled under any of applicable local export control laws and regulations, such products must not be exported without obtaining the export license from the authorities concerned in accordance with the above law.
- No part of this publication may be reproduced or transmitted in any form or by any means, electronic or mechanical, including photocopying and recording, or any information storage or retrieval system, or otherwise, without the prior written permission of H&M Semiconductor CO.,LTD.
- Information (including circuit diagrams and circuit parameters) herein is for example only ; it is not guaranteed for volume production. H&M SEMI believes information herein is accurate and reliable, but no guarantees are made or implied regarding its use or any infringements of intellectual property rights or other rights of third parties.
- Any and all information described or contained herein are subject to change without notice due to product/technology improvement, etc. When designing equipment, refer to the "Delivery Specification" for the H&M SEMI product that you intend to use.
- This catalog provides information as of Sep.2010. Specifications and information herein are subject to change without notice.