

Adjustable Current Detector

DESCRIPTION

The J O 2600 is an adjustable current detector for USB dedicated chargers or cable to indicate current status.

There are two LED pins to indicate different current state in the PT 2600.

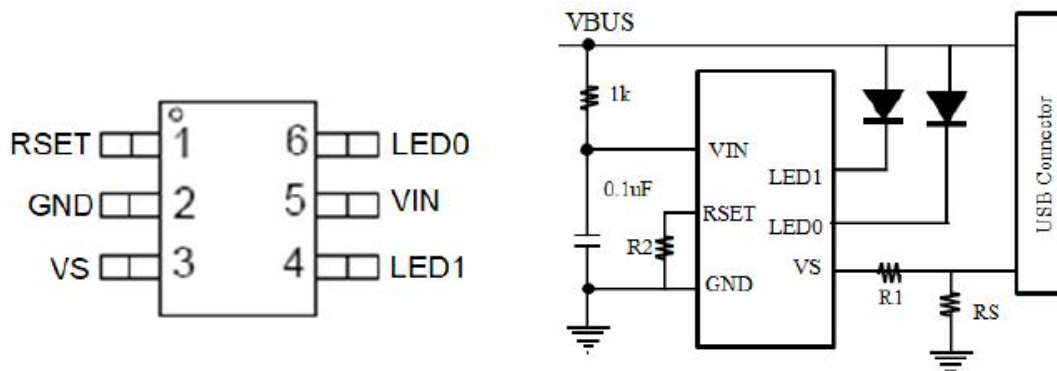
FEATURES

- 4.5V~5.5V Single Supply Operation.
- Adjustable current detection threshold.
- Support single Layer PCB.
- Available in SOT23-6 Package.

APPLICATIONS

USB Adapter
USB Cable

J O 2600 SOT23-6 PACKAGE and SIMPLIFIED APPLICATION

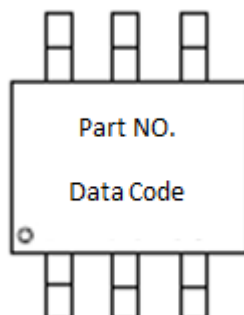


ORDING INFORMATION

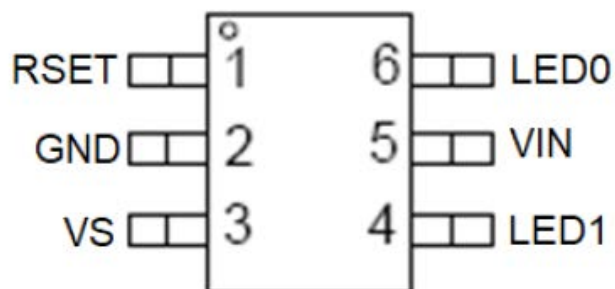
Part Number	Package Type	Package Qty	Op Temp(°C)
PT 2600	SOT23-6	3000	-40~85

Adjustable Current Detector

MARK INFORMATION



PINOUT



PIN FUNCTIONS

NO.	NAME	TYPE ⁽¹⁾	DESCRIPTION
1	RSET	O/I	Connect external resistor
2	GND	G	Ground connection
3	VS	O/I	Sense Voltage
4	LED1	O/I	Connect LED
5	VIN	P/I	Power supply/Input voltage connected to Power Switch; connect a 0.1 μ F or greater ceramic capacitor from IN to GND as close to the IC as possible
6	LED0	O/I	Connect LED

(1) G = Ground, I = Input, O = Output, P = Power

Adjustable Current Detector

PACKAGE INFORMATION

SOT23-6

