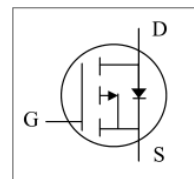


-150V P-Channel Enhancement Mode MOSFET

Description

The HM2P15R uses advanced trench technology to provide excellent $R_{DS(ON)}$, low gate charge and operation with gate voltages as low as 4.5V. This device is suitable for use as a Battery protection or in other Switching application.



General Features

$V_{DS} = -150V$ $I_D = -2.0 A$

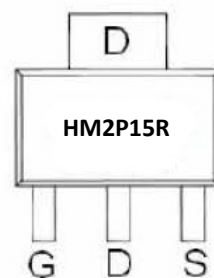
$R_{DS(ON)} < 780m\Omega$ @ $V_{GS}=10V$

Application

Battery protection

Load switch

Uninterruptible power supply



Marking and pin assignment

Package Marking and Ordering Information

Product ID	Pack	Marking	Qty(PCS)
HM2P15R	SOT-223	HM2P15R	3000

Absolute Maximum Ratings ($T_c=25^\circ\text{C}$ unless otherwise noted)

Symbol	Parameter	Rating	Units
V_{DS}	Drain-Source Voltage	-150	V
V_{GS}	Gate-Source Voltage	± 20	V
$I_D @ T_A = 25^\circ\text{C}$	Continuous Drain Current, $V_{GS} @ -10V^1$	-2.0	A
$I_D @ T_A = 70^\circ\text{C}$	Continuous Drain Current, $V_{GS} @ -10V^1$	-1.4	A
I_{DM}	Pulsed Drain Current ²	-6.0	A
$P_D @ T_A = 25^\circ\text{C}$	Total Power Dissipation ³	1	W
T_{STG}	Storage Temperature Range	-55 to 150	$^\circ\text{C}$
T_J	Operating Junction Temperature Range	-55 to 150	$^\circ\text{C}$
$R_{\theta JA}$	Thermal Resistance Junction-ambient ¹	125	$^\circ\text{C/W}$
$R_{\theta JC}$	Thermal Resistance Junction-Case ¹	80	$^\circ\text{C/W}$

-150V P-Channel Enhancement Mode MOSFET

Electrical Characteristics ($T_J=25^{\circ}\text{C}$, unless otherwise noted)

Symbol	Parameter	Conditions	Min.	Typ.	Max.	Unit
BVDSS	Drain-Source Breakdown Voltage	$V_{GS}=0V$, $I_D=-250\mu A$	-150	---	---	V
$\Delta BVDSS/\Delta T_J$	BVDSS Temperature Coefficient	Reference to 25°C , $I_D=-1mA$	---	-0.0624	---	V/ $^{\circ}\text{C}$
RDS(ON)	Static Drain-Source On-Resistance ²	$V_{GS}=-10V$, $I_D=-0.8A$	---	---	780	m Ω
		$V_{GS}=-4.5V$, $I_D=-0.4A$	---	---	980	
VGS(th)	Gate Threshold Voltage		-2.0	---	-4.0	V
$\Delta V_{GS(th)}$	$V_{GS(th)}$ Temperature Coefficient	$V_{GS}=V_{DS}$, $I_D=-250\mu A$	---	4.5	---	mV/ $^{\circ}\text{C}$
IDSS	Drain-Source Leakage Current	$V_{DS}=-80V$, $V_{GS}=0V$, $T_J=25^{\circ}\text{C}$	---	---	10	μA
		$V_{DS}=-80V$, $V_{GS}=0V$, $T_J=55^{\circ}\text{C}$	---	---	100	
IGSS	Gate-Source Leakage Current	$V_{GS}=\pm 20V$, $V_{DS}=0V$	---	---	± 100	nA
gfs	Forward Transconductance	$V_{DS}=-5V$, $I_D=-0.8A$	---	3	---	S
Rg	Gate Resistance	$V_{DS}=0V$, $V_{GS}=0V$, $f=1MHz$	---	16	32	Ω
Qg	Total Gate Charge (-4.5V)	$V_{DS}=-15V$, $V_{GS}=-4.5V$, $I_D=-0.5A$	---	4.5	---	nC
Qgs	Gate-Source Charge		---	1.14	---	
Qgd	Gate-Drain Charge		---	1.5	---	
Td(on)	Turn-On Delay Time	$V_{DD}=-50V$, $V_{GS}=-10V$, $R_G=3.3\Omega$, $I_D=-0.5A$	---	13.6	---	ns
Tr	Rise Time		---	6.8	---	
Td(off)	Turn-Off Delay Time		---	34	---	
Tf	Fall Time		---	3	---	
Ciss	Input Capacitance	$V_{DS}=-15V$, $V_{GS}=0V$, $f=1MHz$	---	553	---	pF
Coss	Output Capacitance		---	29	---	
Crss	Reverse Transfer Capacitance		---	20	---	
IS	Continuous Source Current ^{1,4}	$V_G=V_D=0V$, Force Current	---	---	-0.9	A
ISM	Pulsed Source Current ^{2,4}		---	---	-1.8	A
VSD	Diode Forward Voltage ²	$V_{GS}=0V$, $I_S=-1A$, $T_J=25^{\circ}\text{C}$	---	---	-1.2	V

Note :

- 1.The data tested by surface mounted on a 1 inch²FR-4 board with 2OZ copper.
- 2.The data tested by pulsed , pulse width $\leq 300\mu s$, duty cycle $\leq 2\%$
- 3.The power dissipation is limited by 150°C junction temperature
- 4 .The data is theoretically the same as I_D and I_{DM} , in real applications , should be limited by total power dissipation.

-150V P-Channel Enhancement Mode MOSFET

Typical Characteristics

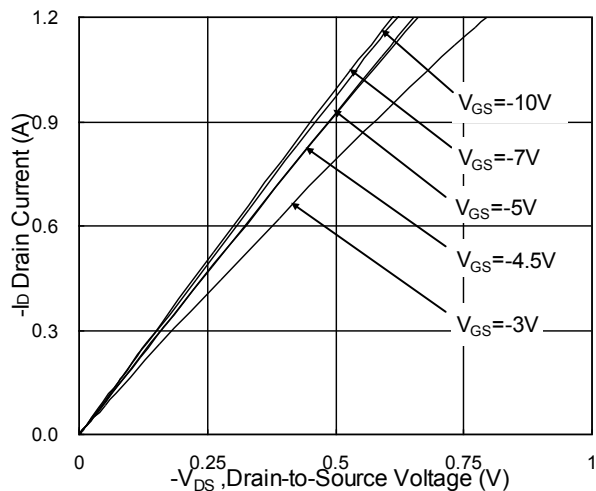


Fig.1 Typical Output Characteristics

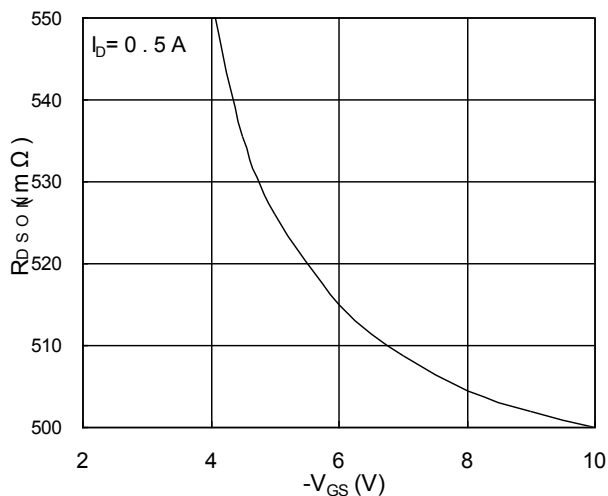


Fig.2 On-Resistance vs. Gate-Source

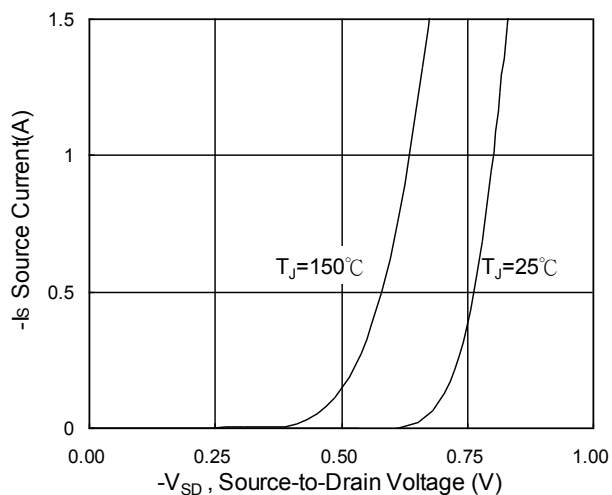


Fig.3 Forward Characteristics Of Reverse

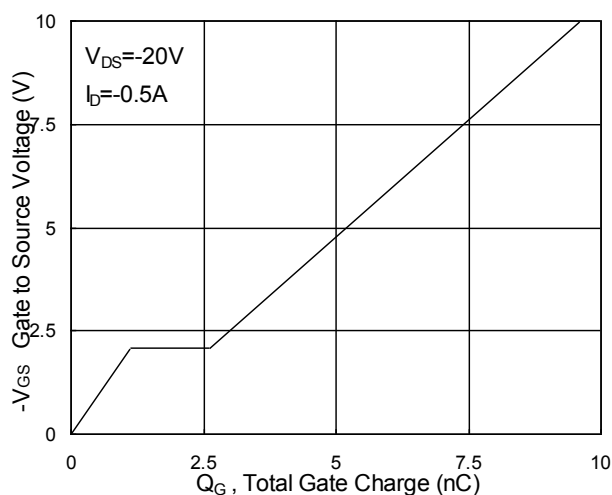


Fig.4 Gate-Charge Characteristics

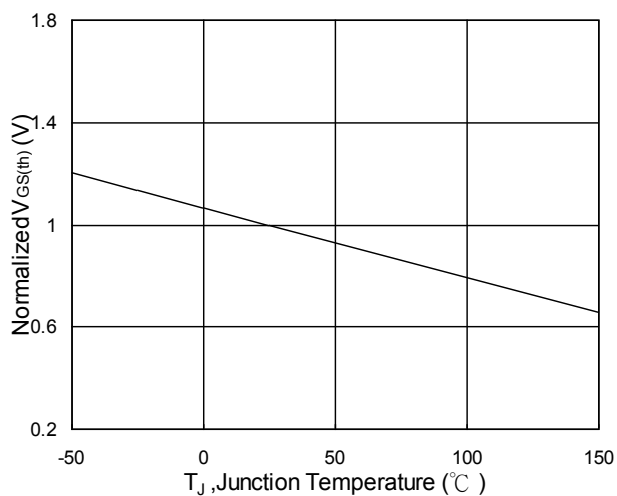


Fig.5 Normalized $V_{GS(th)}$ vs. T_J

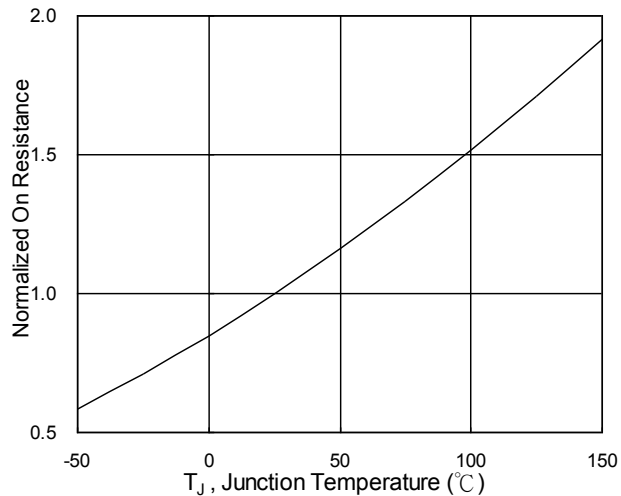


Fig.6 Normalized $R_{DS(on)}$ vs. T_J

-150V P-Channel Enhancement Mode MOSFET

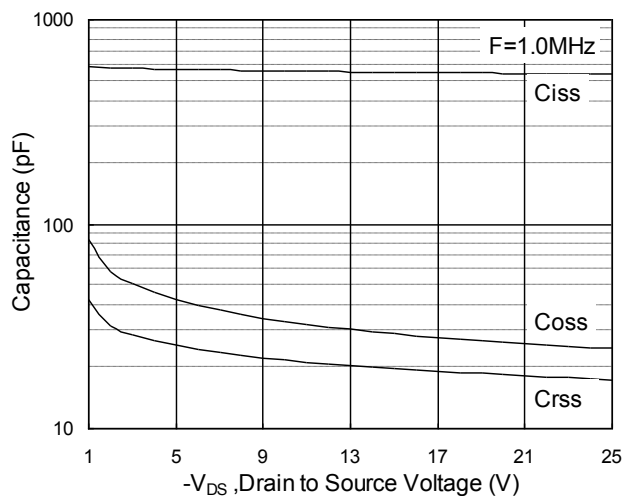


Fig.7 Capacitance

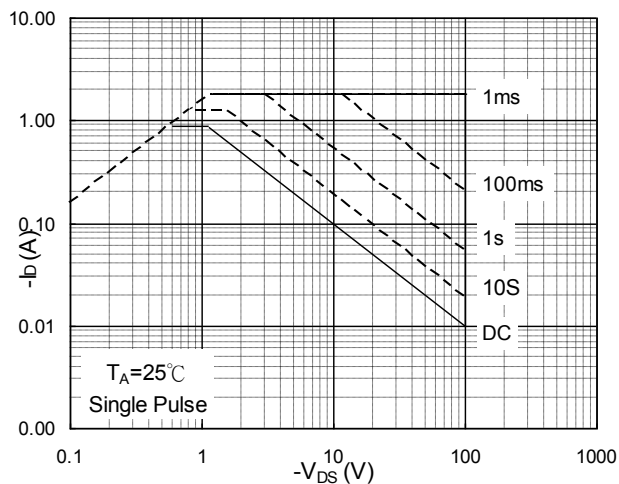


Fig.8 Safe Operating Area

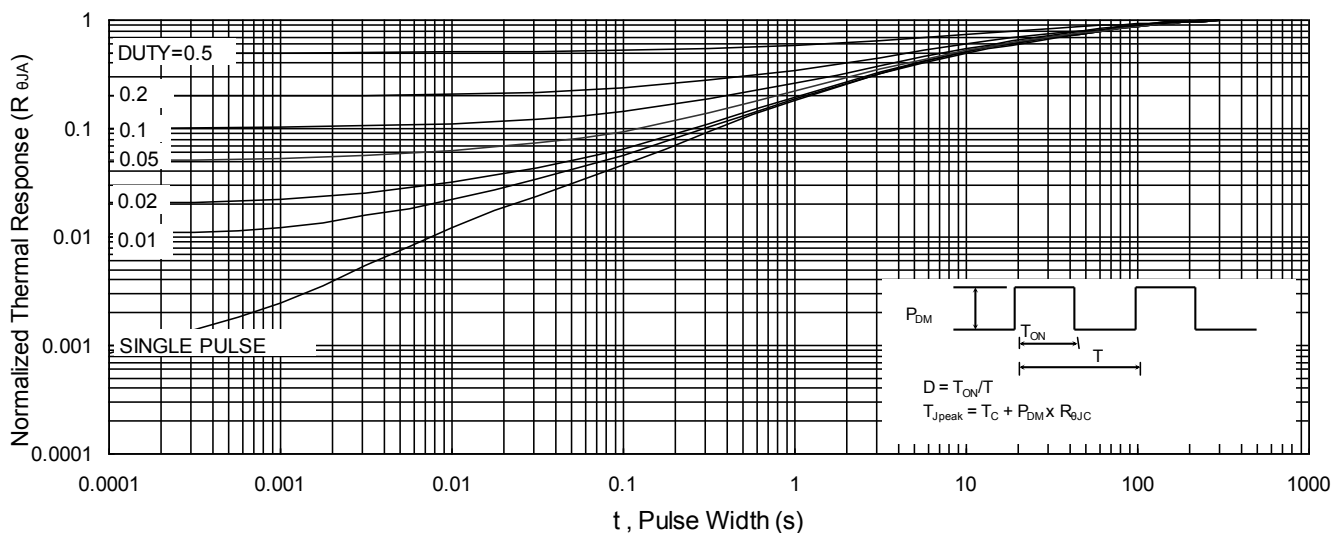


Fig.9 Normalized Maximum Transient Thermal Impedance

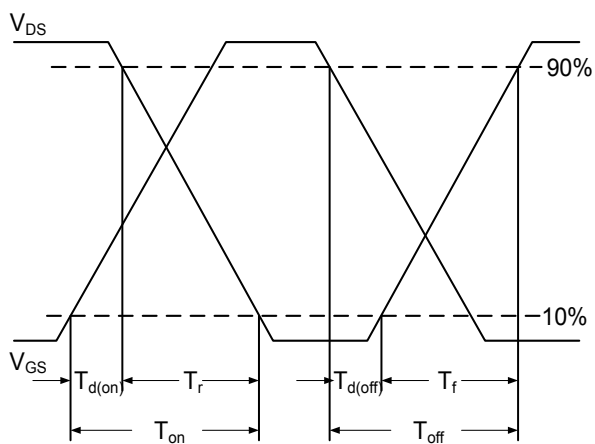


Fig.10 Switching Time Waveform

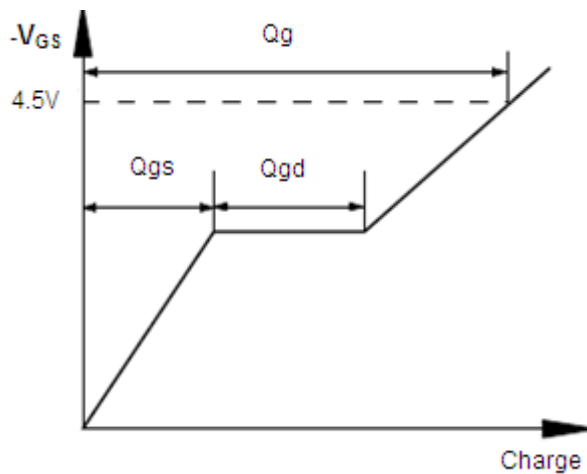
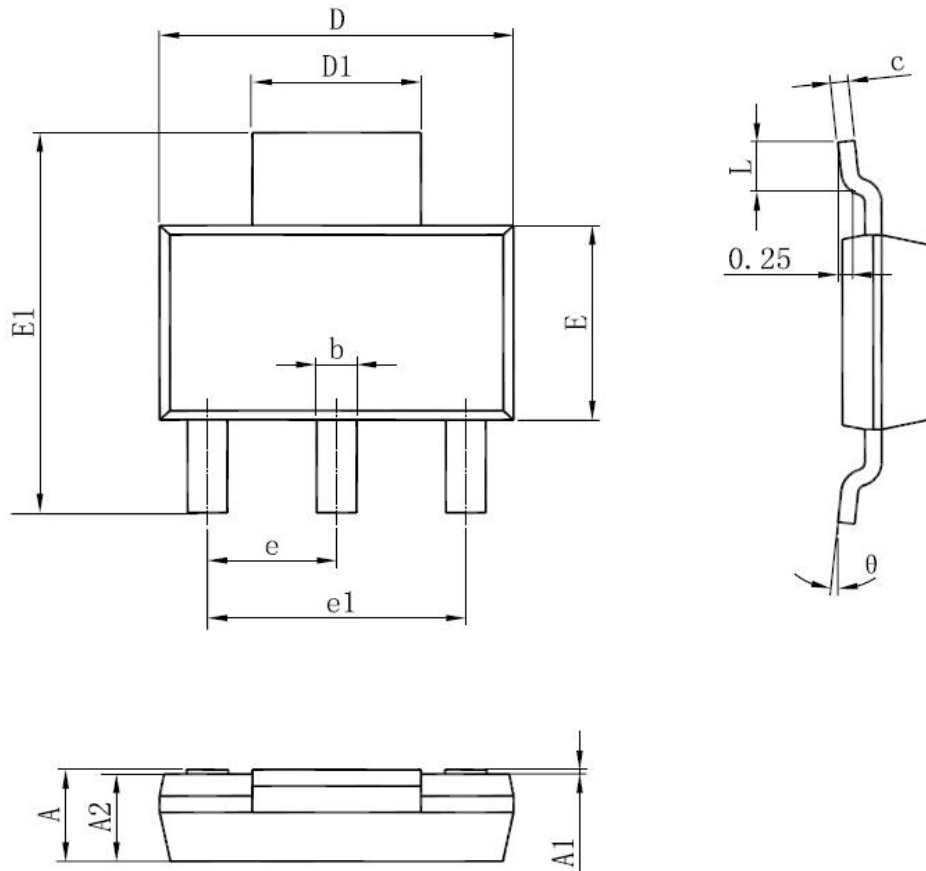


Fig.11 Gate Charge Waveform

Package Information:



Symbol	Dimensions In Millimeters		Dimensions In Inches	
	Min	Max	Min	Max
A	1.520	1.800	0.060	0.071
A1	0.000	0.100	0.000	0.004
A2	1.500	1.700	0.059	0.067
b	0.660	0.820	0.026	0.032
c	0.250	0.350	0.010	0.014
D	6.200	6.400	0.244	0.252
D1	2.900	3.100	0.114	0.122
E	3.300	3.700	0.130	0.146
E1	6.830	7.070	0.269	0.278
e	2.300(BSC)		0.091(BSC)	
e1	4.500	4.700	0.177	0.185
L	0.900	1.150	0.035	0.045
θ	0°	10°	0°	10°

SOT-223 Package